



POOLE MARITIME TRUST

NEWSLETTER JUNE 2024



CHAIRMAN'S REPORT – June 2024

Half way into the year and work in the Trust continues apace, as has become the norm. A busy summer ahead awaits us.

As usual much of the focus in terms of work undertaken by committee members and volunteers continues to be focussed on tasks associated with the archive, which, believe it or not, still continues to increase. It follows that the Trust remains of interest to those undertaking research into the history of the harbour and its environs; visits take place on a regular basis. The Annual General Meeting went well and we were also entertained with an excellent presentation of films from the Trust archive prepared by Peter Lamb and Chris Wood. It was also nice to see Julie Reid presented with the Coates Trophy in recognition of all the work she has done in arranging visits and speakers. The programme for the rest of this year has been organised and is contained in this newsletter.

In terms of publicity, we have been fortunate to have had the opportunity to have a display in the public library below the offices which lasted for all of May. This will be repeated in September. In addition, other opportunities continue to present themselves such as being invited to have a display for a local Neighbourhood Watch drop in event in Canford Cliffs.

The 80th anniversary of D-Day, involves much activity by organisations associated with the history of the harbour and our committee member 'Jack' Hawkins has been instrumental in the production of a DVD which provides great detail into the events surrounding that historic occasion which is being widely circulated to schools and other organisations.

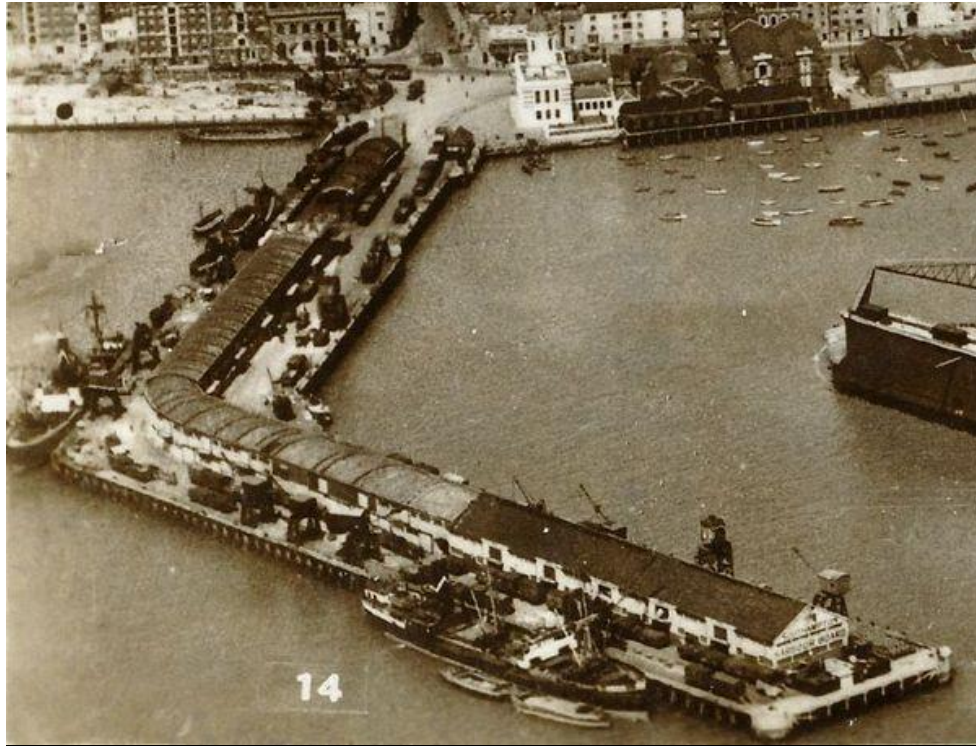
Commodore G H Edwardes OBE RN, Chairman

SOUTHAMPTON'S TOWN QUAY *By -Alan Dumelow*

From my years as a schoolboy ship enthusiast in the late-50's / early-60's (and subsequently in my maritime career) Southampton's docklands are always a nostalgic and happy memory for me, not least the Town Quay, to and from which I regularly travelled (twice a day when working at Union Castle's offices) on the Hythe "Hotspur" ferries. As an important and historic part of Southampton's docks, the Town Quay is often overlooked for its significance and the part it has played in the docks' development. As a teenager and young adult, I was always fascinated by the variety of coasters and small cargo ships that berthed at the Town Quay as I embarked or disembarked the Hythe ferry from the (often slippery) steps at the city end of the quay. The first quay on this site is recorded as being in 1411 and was known as Watergate Quay. Prior to this, the Watergate Quay area was the centre for the building of naval warships during the mediaeval period. By the 18th century, Watergate Quay had fallen out of use and was demolished and replaced with a Town Quay used for passenger services by paddle steamers and the movement of cargo. But subsequent overcrowding made it unsuitable for continued passenger services, resulting in most of the passenger steamers relocating to the Royal Pier when it opened in 1833. In 1847, a horse-drawn tramway was installed on the Town Quay connecting to the Southampton Terminus railway station and, in 1871, the tramway was directly connected to the main railway lines. And in 1876, upgrades to the tramway lines enabled a switch from horses to locomotives. During the First World War the quay was used for military traffic – mainly barges travelling across the English Channel – while the railway lines to the quay were used as sidings for the main docks. Post-WW1, by the 1930's, with construction and improvements to other areas of the docks (notably, the 'New Docks') most of the shipping had moved away from the Town Quay, with the last major freight traffic being recorded as Scandinavian timber imported by Montague Meyer. However, as I recall, cargo services to the Isle of Wight (notably by Carisbrooke Shipping Co.) and small coastal ships continued to frequent the Town Quay throughout the 1960's and early part of the 70's. On 4th May 1970, the Town Quay's railway ceased being used (although some of the iconic railway tracks may still be seen today) and, subsequently, most of the warehouses on the quay were demolished and replaced by offices with, more recently (in the 80's I believe), along with the development of the marina on the west side, the Town Quay has been substantially redeveloped as a prime waterside location with shops, restaurants and cafes. But the Town Quay still remains a successful maritime hub handling around 1.5 million passengers travelling to and from the Isle of Wight and Hythe every year.



A COLOURISED CARD OF THE PERIOD OF TRANSITION FROM SAIL TO STEAM



AN INTERWAR IMAGE WITH COASTERS AND LIGHTERS ALONGSIDE AND THE CORNER OF THE WORLD'S LARGEST FLOATING DOCK GETTING INTO THE PICTURE ON THE RIGHT.



AN INTERESTING POST-WAR IMAGE SHOWING A BUSTLING TOWN QUAY TAKING ADVANTAGE OF THE, THEN, VIBRANT COASTAL TRADE.



THE SCENE TODAY WITH THE COMMERCIAL SHEDS AND WAREHOUSES CONSIGNED TO HISTORY. REPLACED BY OFFICES AND CAFÉ'S. THE RED FUNNEL FERRY TERMINAL MAY BE SEEN BEYOND AND THE SHADOW OF THE ONCE GRAND ROYAL PIER IN THE DISTANCE.



**Poole Harbour Postman
Harry Reeve 1963**

A BURIAL AT SEA WITH A DIFFERENCE

By Richard Clammer.

Here we see the Cosens and Co's paddle steamer "EMPRESS"

She is alongside in Weymouth Harbour at the old landing stage used by Cosens pre-war. Ahead of her is the GWR Channel Islands berth and the breakwater is in fact the Stone Pier in its old form.

The photo was taken on the morning of 13th March 1912. The flag-draped coffin of Mr Spence Hickman has just been brought on board ready for burial at sea. Since it was made of lead inside a wooden box and weighed 9 cwt this was quite an epic! It was a vile day and "EMPRESS" put to sea with fleetmates "LORD ROBERTS", "QUEEN" and "ALBERT VICTOR". The flotilla headed out to sea for a spot to the east of the Shambles Bank. As the committal was being read to the seasick mourners "EMPRESS" took a nasty roll and the coffin flew overboard prematurely!





R.M.S. "QUEEN ELIZABETH" during harsh economic times

"Dockers at Southampton were busy unloading a valuable cargo from the 85,000 ton liner Queen Elizabeth, which arrived from New York. 500 t of linseed was needed for sowing on 11, 000 acres of recently flooded fenlands, and linseed is the most suitable crop. The Ministry of Food pointed out that the seed must be here by the beginning of May so the Cunard White Star owners gave this cargo top priority in place of the ships normal luxury luggage. Picture shows: the sacks of linseed are unloading from the Queen Elizabeth at Southampton ready to be transported to their destination.
2 May 1947"

OUT AND ABOUT
MEMBERS OF THE TRUST HAVE ENJOYED A VERY BUSY AND REWARDING MAY
“AWAY FROM BASE”

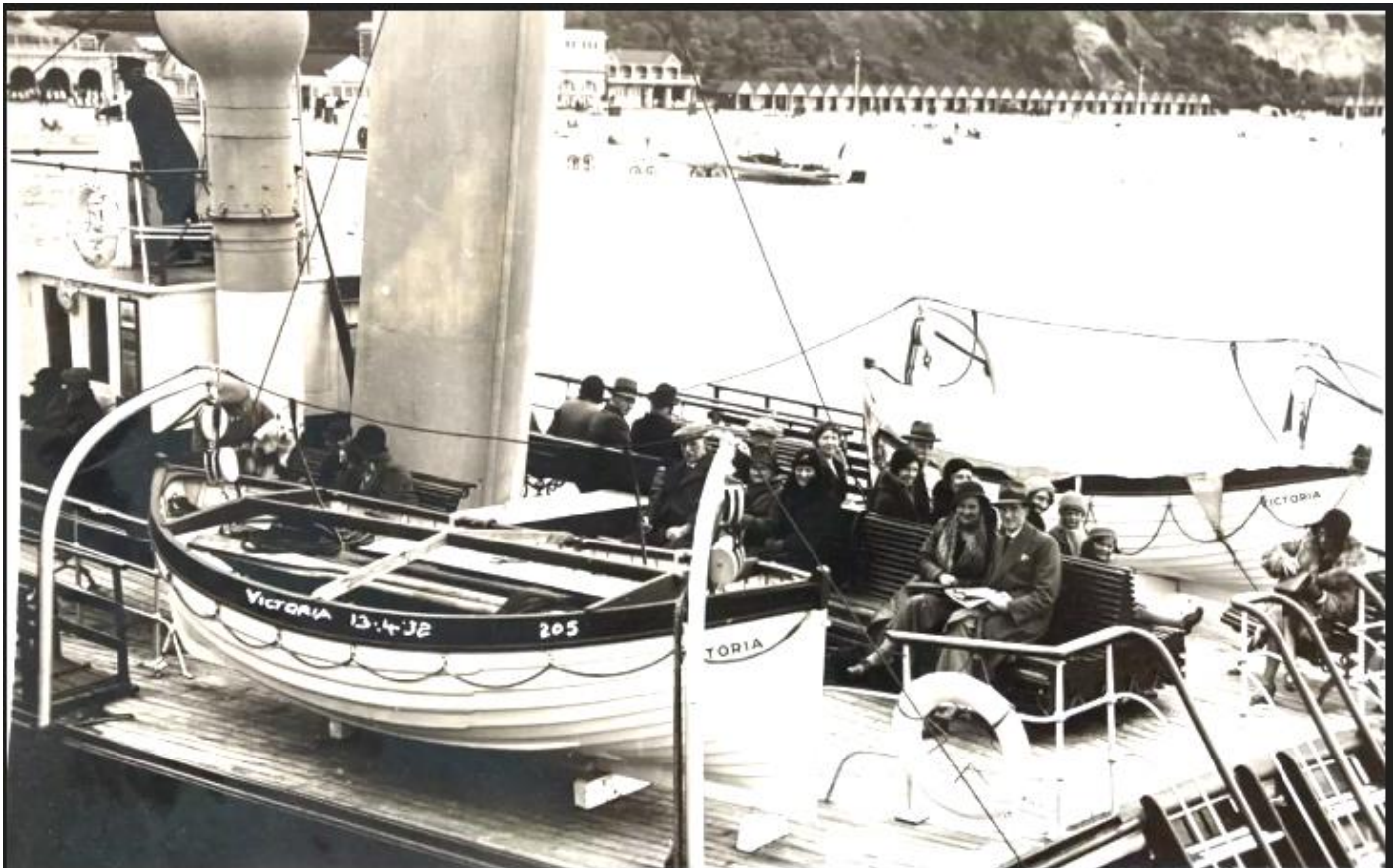
On Friday 10th May we enjoyed a cruise on the Kennet and Avon canal aboard the “Barbara McLellan”. Departing from Bradford Wharf at 10am with clear blue skies we trundled along to the Dundas Aquaduct where we all disembarked to enjoy the views and watch our boat turn around in the Dundas Basin. Sailing back towards Bradford we stopped at the Avoncliff Aquaduct where we again disembarked. Continuing our journey we arrived all too soon back at our starting point. Our thanks to the volunteer crew and Peter Lamb for providing a very pleasant day out.

What a shame that more of our members didn't take up the offer. However, it made the boat very comfortable."





HERE WE SEE ROBERT HEATON DIRECTING OPERATIONS AT THE DUNDAS VAIDUCT AND BOB MATTHEWS ENJOYING THE SPRING SUNSHINE DURING THE LOCKING-OUT ROUTINE



SOME HARDY SOULS ABOARD THE "VICTORIA" ALONGSIDE BOURNEMOUTH PIER ON APRIL 14, 192

VISIT TO THE MOORS AT ARNE

Three volunteers from Poole Maritime Trust were recently invited to attend a presentation and site visit to the Moors of Arne Project. This project is a collaboration between the Environment Agency, RSPB and Natural England to develop mudflats and saltmarshes and create saline lagoons. This aims to mitigate wildlife habitat loss and best manage the expected rising sea levels within the harbour.



Poole Maritime Trust volunteers Robert Heaton, Pat Woodruff and Gavin MacLachlan on a guided tour of the site at Arne

In the large site office at Arne, about twenty people from a number of interested organisations were given a short presentation about the ongoing project at Arne and an update as to the work being undertaken by archaeologists. Eleven archaeologists are currently working on-site and pottery found at Arne that very day was available on display, along with video footage of earlier archaeological finds made at the site. Phil Harding, known for his work on “Time Team” was also on hand to talk about flint and how local shale had been made into jewellery. Then, in the pouring rain, we were driven over the boggy marshland to the large archaeological site atop a low sandy island, very near to the Wareham Channel. There, we were able view the scope of the important archaeological work currently being undertaken.



The archaeological site on The Moors at Arne, near the Wareham Channel

CANFORD CLIFFS PUBLIC LIBRARY DISPLAY

The Trust were invited to mount a display of archive material during the month of May 2024. We are indebted to the library staff for their co-operation and assistance in Making this possible.



Saturday 11th May – CANFORD CLIFFS VILLAGE HALL

As contributors to the Pines and Chines magazine Pat Hennessy invited Poole Maritime Trust to 'take a table' at Canford Cliffs Village Hall which allowed us chance to talk about Poole Maritime Trust, a vibrant charity situated in the Village. We needed two tables. Margaret Morris prepared her table with large local maritime photos, details of Poole Maritime Trust and its membership and also took for sale, the excellent book 'The Book of Poole Harbour', edited by Bernard Dyer and Timothy Darvill. Visitors gravitated to our tables and discussions with Margaret elicited much information with the result of interested people keen to join Poole Maritime Trust. My table exhibited maritime artifacts, albums of maritime photographs and albums of historical postcards, charts and box files from our extensive archive detailing diverse subjects including "The Poole Ship," "The Fishing Industry," "The History of Poole Town and Harbour" & "People and personalities". Much admired was a shipping ledger dated 1902. Its detail of docking dates, cargo carried, current Skipper and to whom the cargo was to be delivered and all in the clearest of Copperplate handwriting which produced many comments. The displays resulted in many visitors to our tables, many questions and admiration of our collection when describing what we held at the PMT premises along with the unseen work we undertake for the Trust. There was also interest in our monthly talks and the social arrangements we enjoy throughout the year. Pat Hennessy kindly provided us with coffee and luxury biscuits which were welcome during the two morning of the exhibition.



Pat Woodruff

A 21st Century Cunarder – “QUEEN ANNE”

By Andrew Cooke – All images : Donna & Andrew Cooke



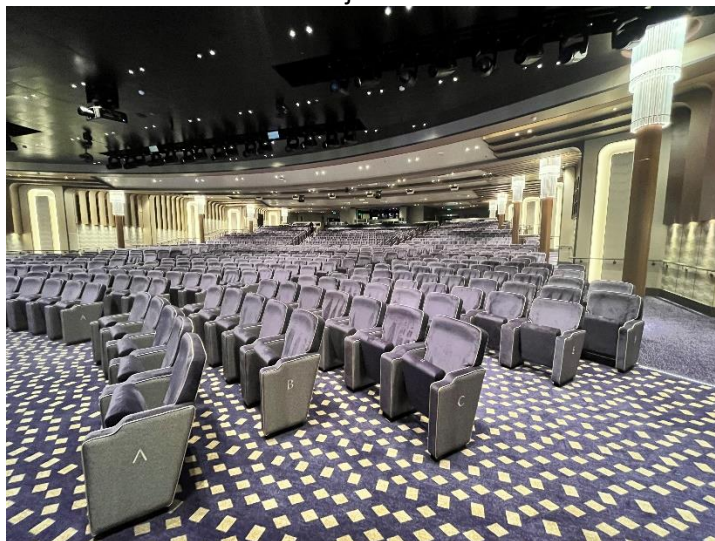
Cunard Line's Southampton based fleet of ships grew from three to four in April 2024 when the impressive 114,188gt Queen Anne, the company's first new ship in 14 years and the 249th ship to sail under the Cunard flag, joined the line up. Until then, the fleet since 2010 had consisted of the Chantiers d'Atlantique-built ocean liner Queen Mary 2 (149,215gt/built 2003) and the Fincantieri-built Vista Class cruise ships Queen Victoria (90,746gt/built 2007) and Queen Elizabeth (90,901gt/built 2010). The Queen Anne was ordered in 2017 and steel cutting began for Yard No. 6274 at Fincantieri's Castellammare di Stabia shipyard on 11th October 2019. Construction of the ship took place at Fincantieri's Marghera shipyard and she was floated out of the building dock on 24th April 2023. The name was announced in February 2022, the first Cunard ship to be named Queen Anne. Her namesake was born in February 1665 and became Queen of England, Scotland, and Ireland from 8th March 1702. She then became Queen of Great Britain and Ireland following the ratification of the Acts of Union on 1st May 1707. Following the death of Queen Mary in 1694, King William reigned alone until his own death in 1702, when Anne succeeded him as Queen. Plagued by poor health throughout her life, Queen Anne passed away 1st August 1714.

The Queen Anne's outline will be familiar to many as she is a cousin to Fincantieri's Pinnacle Class of cruise ships. This series of ships currently consists of three examples, all built for Holland America Line, namely the Koningsdam, Nieuw Statendam and Rotterdam, delivered in 2016, 2018 and 2021 respectively. The Queen Anne is based on a Pinnacle Class hull but is a larger example (compared to the 99,935gt Rotterdam of 2021) at 322.5m long with a beam of 35.6m and a draught of 8.12m. The ship has a crew of 1,225 and, like her fleet mates, she is registered in Hamilton, Bermuda. The ship is propelled by four 12,600kW Caterpillar-MaK 12V43C diesel engines that drive two ABB Azipods. The maximum speed is 22 knots. The Queen Anne arrived at her home port of Southampton on 30th April 2024, a few days later than planned. The 2,996-guest capacity ship was escorted along Southampton Water by tugs and the Ali Cat and Ocean Scene of Solent Cruises and Blue Funnel Cruises were present, carrying spectators. The ship had been formally handed over to Cunard on 19th April and departed from her birthplace on



THE BRITANNIA CLUB BAR

24th April to head for home. The maiden voyage departed Southampton at 21.15 on 3rd May 2024, a 7-night itinerary to La Coruna and Lisbon. The ship paused for a firework display in her honour off Mayflower Park. The third cruise itinerary was a 14-night voyage around the British Isles on 24th May, with calls including South Queensferry (Edinburgh), Kirkwall (where she met up with Pinnacle Class cousin Nieuw Statendam on 28th May), Invergordon, Greenock, Belfast and Cobh. This voyage included the ship's naming ceremony at Liverpool on 3rd June. The ship was under the command of Captain Inger Klein Thorhauge, who became Cunard's first female Captain, having started her career in 1997 as Second Officer onboard Cunard's Vistafjord.



THE ROYAL COURT THEATRE

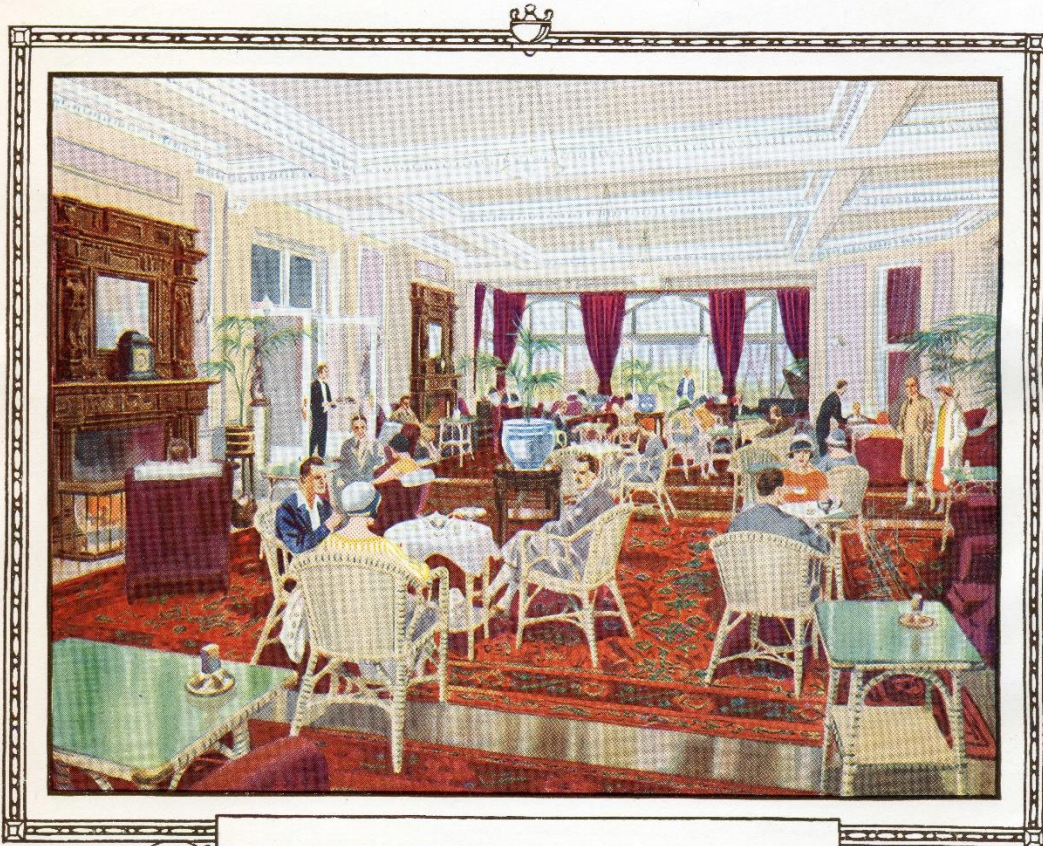
The Queen Anne comprises 14 decks and her décor and facilities represent a stylish step forward in to the 21st Century for the Cunard brand. Tradition is not forgotten but there is a clear recognition of how times are changing. The accommodation includes Cunard's renowned Grills Suites, where luxurious accommodation in a wide range of suites is matched to two of the ship's finest restaurants, the Queens Grill and the Princess Grill. A total of 6 standards of accommodation are available: Britannia Inside; Britannia Oceanview; Britannia Balcony; Britannia Club Balcony; Princess Grill Suites, and Queens Grill Suites. The centre piece of the ship is the Grand Lobby spanning decks 1-3. Public rooms and spaces include the Queens Room (Deck 2), the 835-seat Royal Court Theatre, the Commodore Lounge (Deck 12), casino (Deck 3), library (Deck 12), Carinthia Lounge (Deck 3) and Golden Lion Pub (Deck 2). The Queen Anne also debuts some new dining options in addition to the classic restaurants. There are 15 culinary venues, and these include the Britannia Restaurant (Deck 2/3), the Artisan's Foodhall (Deck 9), Sir Samuel's Steakhouse and Aji Wa (Deck 10) plus Aranya (Deck 9). Deck 9/10 features The Pavilion, a Pool/Bar/Grill/Gelateria/Stage, and a Wellness Café, complete with sliding glass roof.



GRANDEUR FROM A BYGONE ERA

IMAGES FROM THE BROCHURE OF THE BRANKSOME TOWER HOTEL

From the Alwyn Ladell collection



26

The Lounge



22

The Dining Room

23

PORT UPDATE

by Kevin Mitchell

No sooner had the *Barfleur* returned to service from Poole during March, when she was called upon to conduct berthing trials at St Helier (Jersey) on the morning of 26th March.



Recently the States of Jersey and Guernsey have trialled the 162m long DFDS freight ferry *Finlandia Seaways* to test the compatibility of larger ships at both harbours, given the end of Condor Ferries' current licence to operate Channel Island ferry services next year. Brittany Ferries is part owner of Condor Ferries and is now taking a more active role in day-to-day operations. She was assisted in berthing by two tugs, including Jenkins Marine Poole-based *Handfast*. This trial necessitated the cancellation of the normal Poole-Cherbourg crossing that day, instead *Barfleur* sailed empty direct from Poole to St Helier. *Barfleur* was then scheduled to conduct similar trials at St Peter Port (Guernsey) on 15th April, but this was postponed until 24th April due to the sea conditions. This photo of *Barfleur* arriving at St Peter Port was taken by Dylan Ray, with thanks to Mark Pulley. Once again, *Handfast* was on hand to assist, but was not required on this occasion. The 157m long *Barfleur* is the largest passenger ferry to have ever berthed at both harbours, but there is no intention to use her regularly on the Channel Islands route, but she may appear to cover for winter refits. Meanwhile, the joint Brittany Ferries / Condor Ferries agreement to use the *Condor Liberation* on Portsmouth-Cherbourg-Poole duties this summer has been terminated; the ship will operate only from Poole to the Channel Islands.



In further Condor news, their freight ship *Commodore Goodwill* returned to Poole on 14th April for a few days of routine maintenance. This included work on the starboard lifeboat davit, the lifeboat itself mooring in the Poole Quay Boat Haven. She sailed back to Portsmouth on 17th April. Kev Webber provided this aerial photo of *Commodore Goodwill*, *Condor Liberation* and *Barfleur* all together. Meanwhile, *Condor Liberation* experienced engine problems again during May, running on reduced power to an amended timetable until a withdrawal from service was required for repairs to be made. It was at first suggested that *Commodore Clipper* may move to Poole to cover her sailings, but this didn't happen, although *Condor Voyager* did make two appearances on 14th / 15th May.

The 4th April marked 32 years to the day since the then brand new *Barfleur* first arrived at Poole in the livery of Truckline Ferries. Also on that day came the news that another Brittany Ferries' ship that once served Poole, *Duchesse Anne*, had arrived off the Turkish port of Aliaga under the name *Prince*. Although this port is well-known for ship breaking, thankfully the old *Duchesse Anne* seems to have escaped the cutter's torch for the time being. Instead, along with two other ferries, she had been acquired by the Turkish IHH Humanitarian Relief Foundation to form a relief convoy to war-torn Gaza, under the new name *Akdeniz*. What her future holds after this remains to be seen. Built in 1978 as the B&I ferry *Connacht*, the *Duchesse Anne* was best known at Poole for the three summers 1994 to 1996 when she regularly sailed to St Malo in France. At the end of her Brittany Ferries' career she was sold to a Croatian operator where she sailed for many years as the *Dubrovnik*.



Channel Seaways' cargo ship *Trinity* broke down near the harbour entrance on 29th March whilst heading out to the Channel Islands. She had to drop anchor whilst the PHC tug *Herbert Ballam* was summoned to assist. In more cargo ship news, on 23rd April the new multipurpose dry cargo ship *JSP Samsoe* arrived at New Quay to discharge 12 containers. Built by Jiangsu Dajin Heavy Industry of China and delivered on 5 February, *JSP Samsoe* is one of several 5,200dwt mini-bulkers ordered by Jepsen Shipping Partners in partnership with Lubeca Marine. Each is 90m long with a beam of 15.45m, a draft of 6.2m and 3,850 gross tonnage. Thanks to their custom-built design, the new ships feature maximum fuel efficiency whilst offering the greatest possible cargo capacity of 270,000 cubic feet. She sailed for Hamburg that same morning. Also in port at the same time was another new general cargo ship, the *Bellsund Fin*, a Damen Combi Freighter 3850 again delivered in 2024 from a shipyard in Shanghai, and operating for the Baltic Shipping Company.



Fine weather on Good Friday saw 1,180 passengers travel on Brownsea Island Ferries from Town Quay. Following their winter break, Greenslade Pleasure Boats started public harbour cruises that day using their *Purbeck Princess*. Meanwhile the Easter weekend also saw City Cruises begin Swanage service using the *Solent Scene* and *Fortuna*. Also during April, the little *Purbeck Gem* of Greenslade Pleasure Boats was noted on Perenco duties across to Furzey Island.



The Royal Navy's Hunt class mine countermeasures vessel *HMS Cattistock* (M31) has been awarded the Freedom of Poole - the highest honour a town can bestow upon the Royal Navy or one of His Majesty's ships, and a first for the town. Commissioned in 1981, *HMS Cattistock* has long been affiliated with Poole as well as the Dorset village of the same name, and is a regular visitor for the Annual Service of Remembrance. The ship arrived on 2nd May then, in a

ceremony on 4th May with the ship moored at Town Quay, the ship's company of more than 70 personnel marched through the streets of the Old Town led by the Band of His Majesty's Royal Marines from Plymouth. The mayor of Poole then presented the HMS Cattistock Casket Party with the Freedom Scroll. Lieutenant Commander Jonny Campbell, the ship's Commanding Officer, commented "The affiliation between HMS Cattistock and the people of Poole and village of Cattistock is long established and remains an important link. I am really pleased that the ship can visit again and maintain the link between the British people and the Royal Navy. We cannot wait to return to our favourite port."



The first cruise ship visitor of the year arrived on the morning of 10th May in the distinctive shape of the 172m expedition ship *Seabourn Venture*, its maiden call at Poole. Built in 2022 and owned by the Carnival Corporation, she arrived from Plymouth on a 28-day round Britain cruise, and sailed that evening for Dover.

Finally, the Royal National Lifeboat Institution celebrated its 200th anniversary with a series of events at Poole over the weekend of 18th / 19th May. This concluded with a flotilla of 40 international lifeboats both old and new sailing around Poole Harbour.



A POOLE SCHOOLBOY REMEMBERS

My memories of the lead up to D-Day and D-Day itself.

by Brian Traves

I was born on the 17th July 1937 in Boscombe Hospital and brought up at 44 Bascott Road, Wallisdown. I went to St. Mark's School in Talbot Village, and in 1942, every window was surrounded by blast walls. The school was in the middle of Talbot Woods. At weekends I used to cycle to Poole Quay to fill up my saddle bag and paniers with coke dropped from the cranes loading the Gas Works from the ships. We were never cold at home huddled round the one fire. The gradual build-up of Landing Craft and U.S. Coastal Cutters was incredible. It was said you could walk across the harbour from ship to ship with care. Security was strict with armed guards along the Quay. Talbot Woods were packed with American troops and their equipment. They were great to us children providing us with sweets and American comics. We used to play in the woods around the lorries and large bell tents. The Americans made a great fuss of all of us. Every morning our headmistress, Miss Garth, held an Assembly for the whole school consisting of 6 classes. One particular morning she held up a rubber item and told us if we found any of these, they were not balloons so do not attempt to blow them up, as they had been dropped by the Germans and contained poison! It was a little later in life I learned they were condoms. (The GI Joes - over sexed and over here !!) On D. Day 6th June 1944 we were woken at home by the tremendous noise of aircraft overhead. We went into the garden to view the whole sky was full of aircraft as far as you could see. There were 4 engine Halifax Bombers and Dakotas towing Gliders with Fighter Escorts. This continued for hours. The aircraft were based at Tarrant Rushton, Hurn, Ibsley, Holmsley, Stoney Cross and Beaulieu. I was forewarned something big was about to happen, as on the previous morning when I went to school, all the Americans had gone. The woods were uncannily quiet - no more sweets! It was not until days afterwards when it was learned of the carnage on the Utah and Omaha beaches, that we wondered just how many of those brave young men ever made it home.





The entrance to the Trust premises at Canford Cliffs library has been notably enhanced with the recent removal of an overgrown and superannuated hedge and the installation of a very smart fence. For this, we are indebted to Douglas Mumford who has supported us in so many ways.

Our historic collection continues to grow apace. We have outgrown our current premises and thanks to the generosity of Peter and Trelawny Burt we have the benefit of a large, dry and safe store in Poole in which to keep the larger items.

In the past few weeks we have received donations of some wonderful material including glass negatives, copies of Lloyds register and a number of image albums. We are very grateful to those who loan or donate valuable historic material that otherwise could be lost forever.

In a 'first' an American passenger crossing the Atlantic aboard the "QUEEN MARY" is bringing her later Father's collection which we will be picking up when the liner docks at Southampton. He served in the British merchant navy for many years and amassed an interesting archive. This may raise an eyebrow with the Customs Officers !

We are always delighted to see visitors and very keen to recruit more members to the archive team. The Trust offices are located on the first floor of Canford Cliffs library and open each Thursday morning from 09.30. Entrance is via the white double gates pictured above. Parking is free and the hot drinks are always on the go.

Please consider us if you find any maritime related historic images, ephemera or artifacts. Our primary focus is on the history of Poole Harbour but our tentacles have spread to cover the world of shipping and the sea.

FORTHCOMING EVENTS AND OUTINGS THAT ARE OPEN TO ALL

A few places remain on the outing aboard the remarkable historic steamship
"SHIELDHALL"

Please come along if you enjoy the sight and smell of steam-engines or just wallow in the delights of a coastal voyage from Southampton to Poole aboard a unique ship.

MONDAY AUGUST 26TH

SPECIAL EXCURSION ABOARD

"SHIELDHALL"

EUROPE'S LARGEST REMAINING OPERATIONAL STEAMSHIP



**SAIL FROM SOUTHAMPTON TO POOLE WITH SPECIAL COACH FROM POOLE &
BOURNEMOUTH – PASSENGERS ENJOY DISCOUNTED CRUISE RATES
EXPERIENCE THE GOLDEN AGE OF STEAM ABOARD THE REMARKABLE
"SHIELDHALL"**

**WIDE OPEN DECKS, COMFORTABLE SALOON, BAR & REFRESHMENTS.
PASSENGERS HAVE FULL ACCESS TO THE WONDERS OF THE ENGINE ROOM AND BRIDGE**

TIMES

Coach departs : Poole – Old Orchard (adjacent to the Quay) 08.00, Westbourne (Bingo Hall) 08.15,
Wessex Way (Bus pull-in alongside the golf course) 08.25.

SHIELDHALL : Sails from Southampton (Berth 110) at : 10.00 – Due Poole 16.00

FARES : Combined coach and boat : £59.50, Cruise only £49.50 (If booked through the C.C.A.)

Coach only (for pre-booked boat passengers) £12.00

.....BOOKING FORM.....

NAME..... ADDRESS.....

.....E-MAIL :TEL (Mob if poss).....

I/We will be joining the coach at :

Please send me..... Tickets for the coach and cruise @ £59.50 = £.....

Please send me.....tickets for the coach only @ £12 = £.....

Please send metickets for the cruise only @ £49.50 = £.....

Tickets : Please make cheques payable to : COASTAL CRUISING ASSOCIATION and send (along with a SAE)
to: Peter Lamb, 11 Uplands Road, Bournemouth BH8 9SR. For more information, please e-mail :
karilamb1@aol.com or call : 07718934425 (please leave message if no response).

Coach patrons **MUST** indicate boarding point.

AND DON'T FORGET THE STAMPED ADDRESSED ENVELOPE.

EXCURSION PROMOTED, JOINTLY, BY THE COASTAL CRUISING ASSOCIATION AND POOLE MARITIME TRUST



Dorset Branch

The Dorset Branch of the World Ship Society meets on the second Saturday afternoon of the month between September and May at The Centre – Ferndown in East Dorset (BH22 8XH), 2.15pm for a 2.30pm start. All meetings are “hybrid” sharing our Dorset venue event with a wider member community via Zoom giving local members the choice between getting together or enjoying the event at home. Our nine meetings per year have been widely acknowledged as informative and well presented, attracting popular and respected speakers from the local, national and international ships, shipping and maritime history scene. Visitors to our branch are always welcome ~ in person or via Zoom ~ please get in touch. Initial invitations come with no obligation, and we hope you enjoy the afternoon. Ongoing participants are encouraged to become Branch Members ~ for only £20 a year. For details of our future events programme please see www.shipsdorset.org/events ... and do contact us. Hybrid meetings now allow us to welcome you wherever you are in the world! Email us via info@shipsdorset.org or to find out more see www.shipsdorset.org

Dorset Branch Secretary – Steve Pink ... Email – steve@telecommerce.co.uk ... Tel. – 07831 111589

WSS DORSET 2023/24 MEETING PROGRAMME

9th September 2023

~ **Stories of British India ships in the Gulf** ~with Kevin Patience ~

Kevin's links to British India's Mulbera, Dwarka and Dara – all uncovered from passenger to diver!

~ ~ ~

14th October 2023

~ **Krispen's Travels: Coming to America** ~with Krispen Atkinson ~

Krispen takes us to the United States and Canada – another exciting array of ships for us to enjoy

~ ~ ~

11th November 2023

~ **Bosphorus ferries and passenger ships seen in Istanbul** ~with Bill Mayes ~

Ferries through history – many UK built – and enjoy a bonus collection of other passenger ships

~ ~ ~

9th December 2023

~ **British Liners of the 1950s & '60s** ~with Bill Miller ~

Bill takes us back to the decades when Britain had the biggest passenger ship fleet in the world.

~ ~ ~

13th January 2024

~ **The Merchant Navy in the Second World War** ~with David Parsons ~

An island nation at war with a near neighbour was critically dependant on it's merchant shipping.

~ ~ ~

10th February 2024

~ **Sunset Falls on the Intercontinental Ocean-liner** ~ with Ted Scull ~

Ted recalls ships that carried passengers across the world's oceans & memories of voyages

~ ~ ~

9th March 2024

~ **An overview of the Haven Ports** ~with Derek Sands ~

Locations, facilities, shipping and cargoes passing through this network of East Anglian ports

~ ~ ~

13th April 2024

~ **Birger Jarl & Mariefred** ~with David Trevor-Jones ~

A 1950s Sweden-Finland ferry and a 1900s Stockholm coastal ferry – enjoy two classic ships

~ ~ ~

11th May 2024

~ **Seven years at Sea in the Seventies** - with Steve Pink ~

A brief seagoing career – sixteen ships – times of seismic changes in passenger & cargo shipping



BEATING THE SEA BOUNDS

7th JULY 2024

09.30 AM-5.00 PM



POOLE QUAYSIDE AND HARBOUR

FAMILY FUN DAY OUT

Join us for a fun day of historical festivities.



FREE EVENT



MUSIC

Wareham Whalers,
Chris Ricketts,
Murphy's Lore Trio

STREET THEATRE & STORIES



Scaplen's Community Players

Street Theatre

The Hiring Fayre - 12.40 pm - Poole Arms
- 3.20 pm - Nr Fish Shambles

Stories at the Oriel

Half hourly from - 10.30 am - 12.00 pm
and from - 2.15 pm - 3.45 pm

STALLS

FUNFAIR

CRAFTS

EVENT SCHEDULE

09:30	Jury Sworn in at the Customs House and Mayor leave the Port
10:00	Music starts on the stage opposite Poole Arms
12:45	Mayor Returns to the Quay
13:00	Pirate attack along the Quay
13:25	Pirates made to pay the price
13:55	RNLI display on the water
14:15	Music starts again
17:00	Event closes

July 7th, 2024 at Poole Quay and locations across Poole Harbour. This event has music and stories throughout the day, a kid's funfair, crafts and bangs!

Be sure to check our website www.beatingtheseabounds.org.uk for the latest information on dates and venues for this year's celebrations.



Organised by



Supported by

LUSH



Discover Poole
The Name of Poole

THE WATERFRONT
POOLE HARBOUR

Gallagher

PERENCO

ptc Poole Harbour Commissioners

TROIKA

Quay
L. 1000

- Poole Quays Forum
- The Office of Mayor of Poole
- Landmark Creative Studios
- Poole Trust Maritime
- Pirates of Poole

